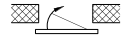

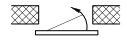
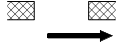
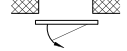
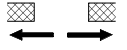
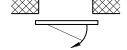


DOOR SCHEDULE

MARK NO.	DOOR SERIES	DOOR THICKNESS	OPENING SIZE		DOOR SIZE		WALL THICKNESS	DOOR ARRANGEMENT	PASS DOOR SWING	HDW'E SET #	REMARKS
			WIDTH	HEIGHT	WIDTH	HEIGHT					

DOOR ARRANGEMENT		PASS DOOR SWING	
PLAN VIEW OF OPN'G SHOWING DIRECTION OF SLIDE TO OPEN		A	
1		B	
2		C	
3		D	

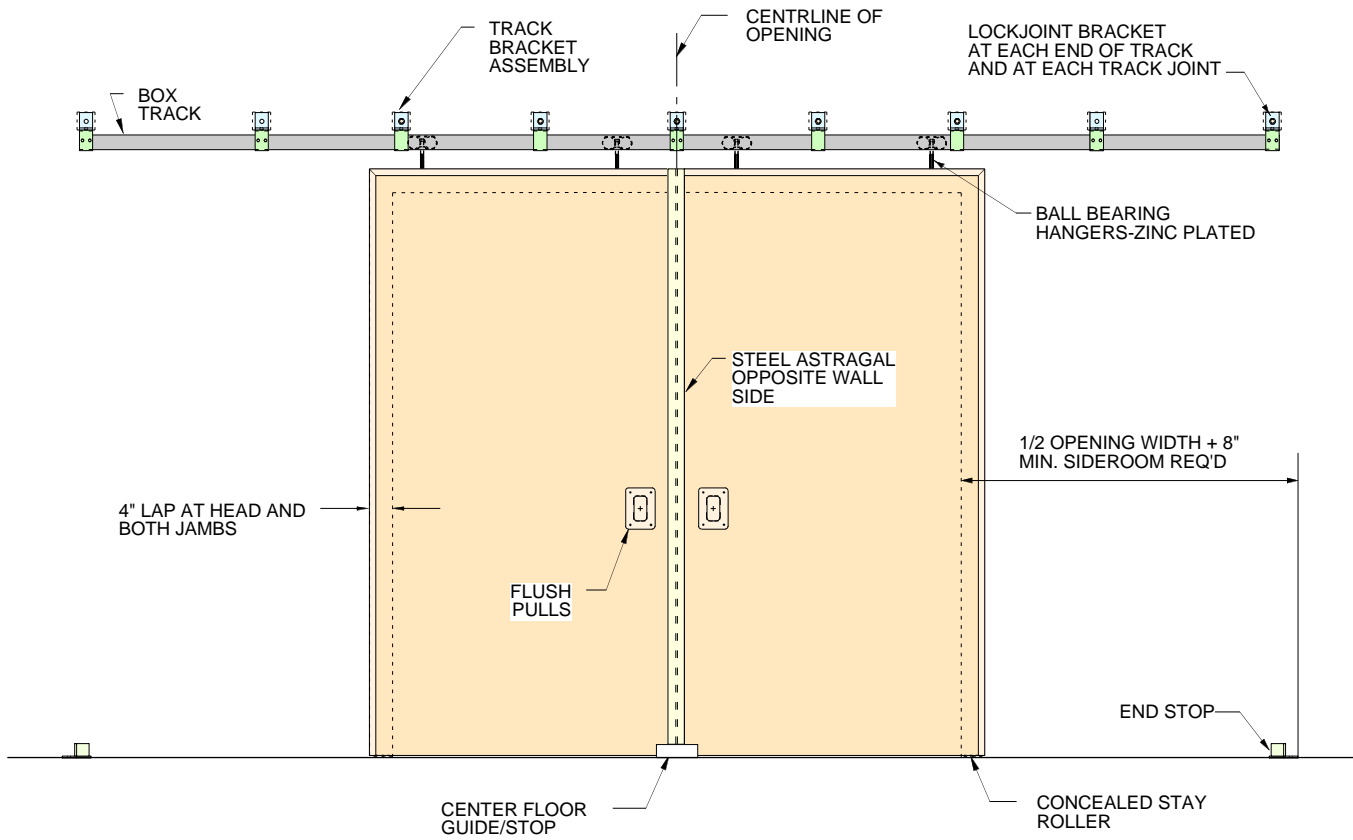
DOOR SPECIFICATIONS

DOORS WILL HAVE A STRUCTURAL CORE OF RESIN IMPREGNATED KRAFT HONEYCOMB OR POLYSTYRENE INSULATION WITH 18, 16, OR 14 GAUGE GALVANNEALED STEEL SKINS BONDED TO THE CORE UNDER PRESSURE. INTERIOR FRAMING CHANNELS WILL BE 14 GA. GALVANNEALED STEEL. THE FLUSH PULLS, 14 GA. LEAD AND TRAIL ARMOR EDGE WILL BE FACTORY WELDED TO THE PANELS. THE CONTINUOUS TOP DOOR ARMOR EDGE WILL BE FIELD INSTALLED ON SPLICE DOORS. THE PANELS WILL BE FACTORY DRILLED AND TAPPED TO RECEIVE HANGERS AND TIE BARS. ALL EXPOSED WELDS WILL BE GROUND SMOOTH AND FILLED. THE DOORS WILL PRESENT A FLUSH APPEARANCE WITH NO EXPOSED FASTENERS. THE DOORS ARE NOMINALLY 1 3/4" THICK.

ALL EXPOSED DOOR SURFACES WILL RECEIVE ONE COAT OF GRAY EPOXY PRIME PAINT AT THE FACTORY.

HARDWARE FOR THE DOORS WILL HAVE A GALVANIZED OR ZINC PLATED FINISH. HARDWARE INCLUDES BOX TRACK, ADJUSTABLE TRACK BRACKETS, WALL BOLTS, AND CONCEALED STAY ROLLER. HANGERS SHALL BE ZINC PLATED.

POLYSTYRENE CORE INSULATING VALUES	
R=7.4	U=.14



BI-PARTING SLIDE ELEVATION

3500 SERIES SLIDING DOOR



PROJECT	
LOCATION	JOB NUMBER:
ARCHITECT	DATE:
CONTRACTOR	DRAWN BY:
DISTRIBUTOR	DRAWING NO. OF