

WHY IS A FOUR-FOLD DOOR RIGHT FOR YOU?

Superior Performance

The underlying reason for selecting a Four-Fold door for any application is the need for superior performance. The alternatives; sectional overhead doors, telescoping and coiling steel doors, are often much less expensive at the initial installation but in many cases cannot hold up in service. The heavy-duty design and construction of the Four-Fold door enables it to function under high cycle and other severe conditions which create chronic service and maintenance problems for the conventional alternatives.

Speed

Four-Fold doors clear the opening at an average speed of 24 inches per second. Conventional overhead and coiling doors operate between 8 to 12 inches per second.

14' x 14' Overhead Door = 14 to 21 Seconds to Open

14' x 14' Four-Fold Door = Less Than 7 Seconds to Open

The high speed operation of the Four-Fold door minimizes heating and cooling losses and also reduces waiting time, thus increasing productivity.

Horizontal Movement

The Four-Fold door moves horizontally rather than vertically. As a result, the door is visible throughout the opening motion. It is common with overhead sectional and coiling steel doors for delivery vehicles, pick-up trucks or even passenger cars to begin driving through the door opening after losing sight of the bottom of the door, only to hit the bottom panel as they move through the opening. A collision of this type will make it impossible to operate the door (especially with telescoping & coiling steel doors which cannot tolerate any denting or deforming of the slats). In contrast, the Four-Fold door will operate with dents and similar abuse.

Maintenance

Standard preventative maintenance (PM) on Four-Fold doors includes applying grease to hinges and operators. With general yearly PM, Four-Fold door operators and components are designed to perform over 1 million cycles. Conventional sectional and coiling doors require constant spring and cable maintenance and replacement to keep them in safe working condition. Failure to keep up with costly PM on sectional and coiling steel doors can result in door failure which can cause both damage to equipment and injury to personnel.

Manual Operation

The Four-Fold door's manual operation is quick and easy with the simple pull of a cord. It requires no springs under high tension or time consuming chain hoists or heavy lifting.

NEW Now available with integrated battery backup

DOOR ENGINEERING SOLUTIONS

Door Engineering and Manufacturing has been offering industrial, commercial, fire rated, aviation and specialty door solutions for over 40 years. Door Engineering's complete door systems can meet even the most challenging and unique requirements. From standardized systems to custom designs, let Door Engineering and Manufacturing put their years of door system experience to work for you on your next project.

- Four-Fold Doors
- Top Hung Sliding Doors
- Tip Up Doors
- Bottom Rolling Doors
- Vertical Lift Doors
- Specialty Application Designs



Standard 3 year warranty and optional 5 year warranty only from Door Engineering.

For product sheets, specifications, drawings and design assistance contact a Door Engineering technical product specialist today or visit Door Engineering on the Web at www.doorengineering.com. With Door Engineering's years of experience, it's easy to find the door system solution that's right for you!



Door Engineering
and Manufacturing

400 Cherry Street, Post Office Box 5 | Kasota, Minnesota 56050-0005
1-800-893-3229 or 507-931-6910 | FAX 507-931-9318 | E-mail: dooreng@doorengineering.com

www.doorengineering.com

FF8511



FOUR-FOLD DOORS



Door Engineering
and Manufacturing

"Securing the Future"

Don't sacrifice form for function! Get both with Door Engineering's Four-Fold Door Systems

High Speed, High Cycle Operator:

Less moving parts means higher speed, more cycles and less maintenance.



NEW

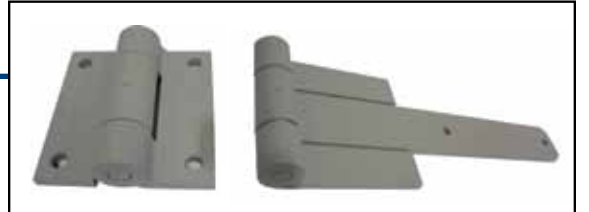
High-speed ALgorithm Drive Operator "HAL":

Fully programmable speed, acceleration and deceleration, integrated battery backup, and Collision Detection System.

Designed & Tested for Over 1 Million Cycles

Precision Hinges and Hardware:

Designed for high cycle and precise movement



Safety and Automation:

Fully customizable controls and safety inputs, including interior/exterior photo eyes, presence/motion sensors, and loop detectors for complete and worry free automation



Vision Lites:

Standard 1" insulated low-e glass for optimal energy efficiency. Customized layouts to meet your design criteria, including arched frames.



Safety Edges:

Electric edges are now available with wireless edge technology which eliminates draped wiring across the panels.



Full Perimeter Seals:

Keep the weather out and the climate control in.



Customized Panel Layouts:

Choose from Visionlites, Grilles, Decorative Paneling, Wood/Composite Cladding



Hurricane Rated:
FBC Approved for 65psf +/-, including approval for HVHZ. FBC #FL8446

HURRICANE RATED
NOW APPROVED FOR HURRICANE ZONES
FBC PRODUCT APPROVAL #FL8446
(Includes HVHZ and Impact Rating)

See the Door Engineering Difference